

Commencement

SPRING 2026



PENN STATE WILKES-BARRE

Saturday, May 9, 2026

Athletic and Recreation Building Gymnasium

9:00 a.m.



PennState



National Anthem

by Francis Scott Key

O say, can you see, by the dawn's early light,
What so proudly we hailed at the twilight's last gleaming;
Whose broad stripes and bright stars, thro' the perilous fight,
O'er the ramparts we watched, were so gallantly streaming?
And the rockets' red glare, the bombs bursting in air
Gave proof thro' the night that our flag was still there.
O say, does that Star-Spangled Banner yet wave
O'er the land of the free and the home of the brave!

Alma Mater

by Fred Lewis Pattee

For the glory of old State,
For her founders, strong and great,
For the future that we wait,
Raise the song, raise the song,

Sing our love and loyalty,
Sing our hopes that, bright and free,
Rest, O Mother dear, with thee.
All with thee, all with thee.

When we stood at childhood's gate,
Shapeless in the hands of fate,
Thou didst mold us, dear old State,
Dear old State, dear old State.

May no act of ours bring shame
To one heart that loves thy name,
May our lives but swell thy fame,
Dear old State, dear old State!



To our guests



Welcome to Penn State Wilkes-Barre's Spring 2026 commencement exercises.

Commencement, the solemn but joyful culmination and recognition of the graduates' years of study, is an important occasion for the University, its faculty, staff, and students. All guests and participants are requested to avoid unnecessary conversation or moving about during the exercises.

Only authorized press and University photographers are permitted on the floor to take pictures once the exercises are in progress. You are welcome to take pictures from your seat, but please be mindful of those seated behind you.

When the processional party enters at the beginning of the ceremony, the audience rises. Please remain standing until all members of the platform party have taken their places on the platform and during the singing of the national anthem.

Applause is welcome during presentation of the individual candidates.

Following the singing of the alma mater, there is a recessional. The audience is requested to rise during this period.

Helpful information



Scan the QR code above or visit wb.psu.edu/grad2026 to view:

- the complete digital program
- video of the ceremony
- information and resources for graduates



Accommodations

Penn State encourages persons with disabilities to participate in its programs and activities. If you anticipate needing any type of accommodation or have questions about the physical access provided, please contact Business Services at 570-675-9110.

Assisted Listening Devices

To request a device, please ask any campus employee to direct you to our IT staff.

Lost and Found

Lost items will be taken to the Police and Public Safety Office in Nittany Courts E-F (behind the Science Building).

Restrooms

Find restrooms on either side of the building hallway. Additional restrooms are located across the road in the Student Commons.

Policies for a Healthy Environment

The possession or consumption of alcoholic beverages, tobacco and e-cigarettes on campus is prohibited. Your admission to any facility is conditional upon compliance with the above. The University reserves the right to refuse admission to, or remove, any person who violates this prohibition.



Campus History



THE PENNSYLVANIA STATE UNIVERSITY was chartered in 1855. The Land Grant Act of 1862, signed by Abraham Lincoln, gave the University its early growth. In 1874, the name was changed to The Pennsylvania State College; and in 1953, changed to The Pennsylvania State University in formal recognition of what it had long since become: one of the leading universities in the nation.

Penn State Wilkes-Barre traces its history back to 1916, making it the oldest higher educational institution in the Wyoming Valley. It began in May of 1915, when two Penn State graduates, reacting to the needs of the local anthracite mining industry, proposed the development of a Penn State engineering center in Wilkes-Barre. "King Coal" reigned supreme at that time in the Wyoming Valley and engineers were needed to improve mining methods and worker safety. The response from local citizens and civic organizations was overwhelming, and on November 7, 1916, the Penn State Department of Engineering Extension began offering evening classes to 150 students in the former Coughlin High School. The new Penn State Department of Engineering Extension offered courses in Advanced Mathematics, Surveying, Reinforced Concrete and Mechanics.

By 1923, three-year certificate programs were started in Mechanical, Electrical, Civil and Mining Engineering. Later, Aeronautical and Textile Engineering and Air Conditioning were added.

During the years spanning World War II, the school, now known as The Pennsylvania State College Wilkes-Barre Technical School Center, offered tuition-free, government-sponsored courses to train women and older men to replace the younger men in industry who joined the war effort. The non-credit, college-level courses trained workers already in war production to take over more highly skilled jobs. Women took the courses to help in the production of war materials.

The courses (Business Administration, Building Construction, Industrial Electricity, and Mechanical and Production Tool Design) were approved by the Veterans Administration under the "on-the-job training" provisions of the G.I. Bill of Rights. Much of the success of the school can be attributed to the flexibility of its offerings. Programs were added and removed as demand directed.

Each passing year brought more change and growth to the school. In 1949, the Engineers' Council for Professional Development recognized the engineering courses taught at the institute with accreditation. Then, during the 1953-54 academic year, the two-year program leading to an associate degree in Engineering began. Thirty-nine students completed this program and were the first in the University to receive their associate

degree in Engineering.

In 1957, the two-year Surveying Technology program was approved, the only one of its type in Pennsylvania. Today, Penn State Wilkes-Barre is the only location in the commonwealth offering a baccalaureate degree in Surveying Engineering.

In 1950, needing more space, the school moved its classes to the Guthrie Building in Wilkes-Barre. It remained there until the mid-1960s when Richard and Helen Robinson of Connecticut gave Hayfield House and the surrounding farm property in Lehman to Penn State University.

Hayfield House was built by coal baron John N. Conyngham and his wife, Bertha, in the early 1930s. At that time, the home was valued at approximately one million dollars. The Conynghams spent about four months each year at Hayfield Farm, where they raised a variety of livestock and grew a range of crops.

When the mansion was gifted to Penn State, it was converted into administrative offices and classrooms. The former 19-car garage now houses the Student Commons and bookstore. Over time, several other buildings were added to meet the campus' growing needs.

Most of the original furnishings are gone from Hayfield House now, but visitors still can enjoy the magnificent architectural aspects of the building and the unique characteristics of each room. Volunteers maintain a tradition of offering tours to the public upon request.

Commencement Ceremony

Order of Events

PROCESSIONAL

Please stand at your seat.

CALL TO ORDER

Wei-Fan Chen, Ph.D., Professor, Information Technology

NATIONAL ANTHEM

Jonathan Pineno, Assistant Teaching Professor, Music and Art

WELCOME

Jill Schwartz, Chair, Penn State Wilkes-Barre Advisory Board

HONORS AND AWARDS

Salvatore Marsico, J.D., Chair, Wilkes-Barre Faculty Senate

STUDENT MARSHAL ADDRESS

Pacelyn King '26, B.A., Corporate Communication

INTRODUCTION OF COMMENCEMENT SPEAKER

Brayden Rogowski '26, B.S., Criminal Justice

COMMENCEMENT ADDRESS

Donovin Lindsay, '14, '21 M.P.S.

CONFERRING OF DEGREES

Renata Engel, Ph.D., Vice President for Commonwealth Campuses

ALMA MATER

Jonathan Pineno, Assistant Teaching Professor, Music and Art

RECESSIONAL

Please remain standing at your seat.

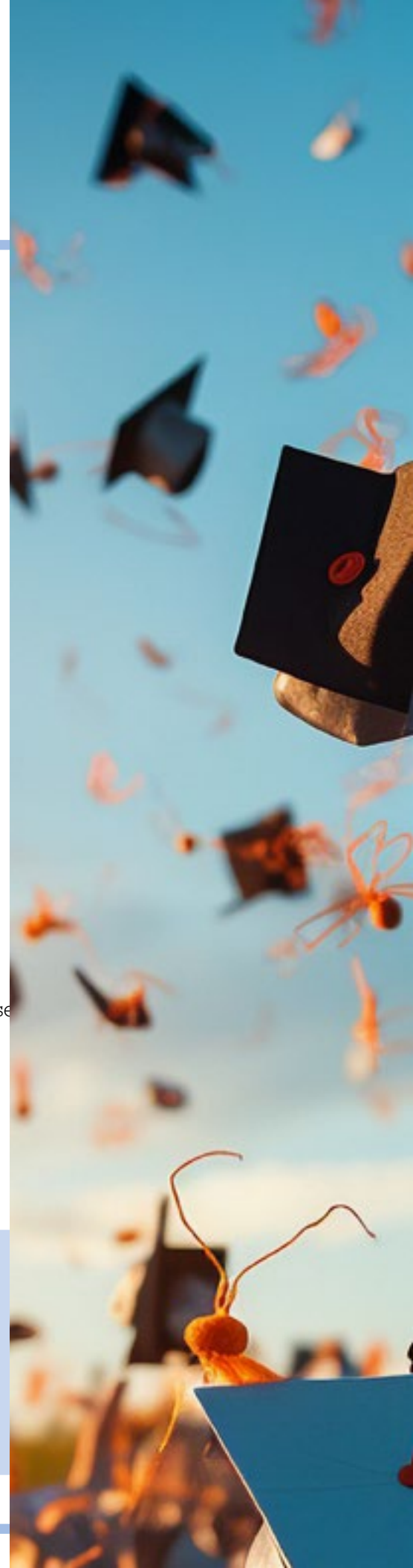
FACULTY MARSHAL

Wei-Fan Chen, Ph.D., Professor of Information Technology

STUDENT MARSHALS

Pacelyn King '26, B.A., Corporate Communication

Brayden Rogowski '26, B.S., Criminal Justice



Commencement Speaker Donovin Lindsay

Donovin Lindsay is a Penn State Wilkes-Barre alumnus, nonprofit founder, educator and college-access advocate. He earned a bachelor's degree in administration of justice from Penn State Wilkes-Barre in 2014 and a master's degree in psychology of leadership from Penn State World Campus in 2021.

As a student, Lindsay was highly involved in campus leadership, orientation programs and student organizations, devoting his time and talent to the campus, his peers, and future Penn Staters. He later served as an assistant director of admissions at Penn State, serving the Altoona and Harrisburg campuses.



“Being invited back as the commencement speaker is one of the greatest honors I have received, and I plan to show up for these graduates the same way this campus showed up for me.”

Lindsay founded and leads numerous education-focused ventures and serves as president and chief visionary officer of College Knowledge Foundation, a nonprofit that provides free and low-cost college access resources to underserved students and families. He also works as a recruiter at JDS Staffing, specializing in talent acquisition for GE Aerospace.

A life member of the Penn State Alumni Association, he was the 2025 recipient of the Alumni Association's Martin R. Cepeda, Jr. Award for Alumni Career Advancement and Development. Lindsay is regularly invited to speak at Penn State campuses about mentorship, leadership, team building and making the most of the Penn State experience.



Academic dress

The traditional costume worn at commencement exercises is a record of the academic achievement of the participating individuals. Its use originated at English and European universities during the twelfth and thirteenth centuries. Medieval institutions of higher learning were customarily operated by monastic orders, and students as well as faculty wore the habit of monks.

The Gown

The level of degree is indicated by the gown's cut. Doctoral gowns have full sleeves that are round and open. Gowns worn by the masters have long, closed, somewhat fuller sleeves, with an arc near the bottom; the arm goes through a slit, giving the appearance of short sleeves. Baccalaureate gowns have long, pointed sleeves. Both the baccalaureate and master's gowns are untrimmed, but the doctoral gown is faced with velvet, either black or in a color to indicate the nature of the degree; three velvet bars adorn each sleeve. The gold tassel on the cap also signifies the doctorate.

The Hood

The most significant part of the academic dress is the hood; the longer the hood, the more advanced the degree. The border color indicates the academic field: arts, white; theology, scarlet; law, purple; medicine, green; music, pink; philosophy, dark blue; science, golden yellow; engineering, orange; economics, copper; public health, salmon pink; fine arts, brown; accountancy and commerce, drab; library science, lemon; and education, light blue. The colors of the lining inside the hood indicate the school that granted the degree; Penn State's colors are dark blue and white.

Academic Honor Cords

Led by the Office of Undergraduate Education, the academic honor cord initiative recognizes the top 12 percent of baccalaureate degree candidates in each college and at every campus. Students who have earned Cum Laude will receive a white cord; those who have earned Magna Cum Laude will receive a blue cord; and those who have attained Summa Cum Laude will receive a blue and white cord.



Associate degrees

College of Engineering

Surveying Engineering Technology (A.EngT.)

Program Coordinator: Dimitrios Bolkas, Ph.D.

- Easton Orion Gmitter
- Thomas K. Oliver
- Daniel Scott Sassaman

University College

Business Administration (A.S.)

Program Coordinators: Erin Brennan, J.D. and Theresa Clemente (honorary)

- Avery Sophia Rash

Information Sciences and Technology (A.S.)

Program Co-Coordinators: Wei-Fan Chen, Ph.D. and Brian Reese

- Caleb Christopher Balas
- Sunday Sem (*Fall 2025 graduate*)

Baccalaureate degrees

College of Engineering

Electrical Engineering Technology (B.S.)

Program Coordinator: Timothy Sichler

- Elizabeth Clarice Hulbert
- Natalie Klimek (*magna cum laude*)
- William Lee Rought
- Timothy Matthew Schechterly, Jr.
- Noah Stephen Zim

Surveying Engineering (B.S.)

Program Coordinator: Dimitrios Bolkas, Ph.D.

- Alexis Jade Farber

University College

Business (B.S.)

Program Coordinator: Erin Brennan, J.D. and Theresa Clemente (honorary)

- **Caleb Arthur Cornell**
- **Adam Biagio Musto**
- **Robert John Napersky**
- **Jacob Andrew Seymour**
- **Sadie Layne Taylor** (*cum laude*) (*Fall 2025 graduate*)
- **Garrett P. Vought** (*Fall 2025 graduate*)

Corporate Communication (B.A.)

Program Coordinator: Natalya Vodopyanova, Ph.D.

- **Maya Rhea Davison**
- **Pacelyn April King** (*summa cum laude*)
- **Briana Allison Mele** (*Fall 2025 graduate*)
- **Brady Thomas Sholtis**

Criminal Justice (B.A.)

Program Coordinator: Pamela Black, Ph.D.

- **Hannah Marie Cook**
- **Alekzander Nickolas Radziewicz**
- **Anna Smagin** (*Fall 2025 graduate*)

Criminal Justice (B.S.)

Program Coordinator: Pamela Black, Ph.D.

- **Hunter Wayne Chackan**
- **Caroline Faith Duffy**
- **Jennifer Stephanie Gordillo Cadme**
- **Javar Josey**
- **Jaidyn Gail Kotch** (*Fall 2025 graduate*)
- **Brayden Mark Rogowski** (*summa cum laude*)
- **Abigail Ruth Strange** (*magna cum laude*) (*Fall 2025 graduate*)
- **Sarah Ashlee Watkins**

Information Technology (B.S.)

Program Co-coordinators: Wei-Fan Chen, Ph.D. and Brian Reese

- **Tyler Boraski** (*cum laude*)
- **Nikolas L. Cimoichowski** (*Fall 2025 graduate*)
- **Aaron Nathan Lee** (*Fall 2025 graduate*)

Project and Supply Chain Management (B.S.)

College Representative: Erin Brennan, J.D.

- **Sadie Layne Taylor** (*cum laude*)

Rehabilitation and Human Services (B.S.)

Program Coordinator: Melisa Littleton

- **Hana Fall**
- **AngelinaRose Irvin**
- **Gabriella Leigh Schmoll**
- **Joanna Renee Shaw**

Eberly College of Science

Statistics (B.S.)

College Representative: Adriana Dinescu, Ph.D.

- **Charles John Floryan**

Note: The information in this document was produced on April 27, 2026, as an unofficial list of students who indicated an intent to graduate spring semester 2026. Changes may have occurred after this production date and may not be reflected in the content.



2025–2026 Graduates



Caleb Balas

A.S. in Information
Sciences & Technology

*"If you just have true faith
and confidence in yourself, you
can achieve anything no matter
what your struggle is."*



Tyler Boraski

B.S. in Information Technology



Hunter Chackan

B.S. in Criminal Justice

"Due tomorrow? Do tomorrow."



Nikolas Cimoichowski

B.S. in Information Technology

*"Brian Reese [was most influen-
tial] for his help and guidance."*



Hannah Cook

B.A. in Criminal Justice

*"[My favorite parts of being a
student here were] the friends
and connections I made
along the way."*



Caleb Cornell

B.S. in Business

*"Alex Ellsworth got me involved
everywhere on campus and I
couldn't thank him more for that."*

2025–2026 Graduates



Maya Davison
B.A. in Corporate
Communication

"[My favorite class was] creative writing with Iris Ouellette. It revitalized my love for writing."



Caroline Duffy
B.S. in Criminal Justice

"Peace begins with empathy."



Hana Fall
B.S. in Rehabilitation &
Human Services

"Professor Littleton inspired me to keep pushing onward despite the obstacles life throws at you."

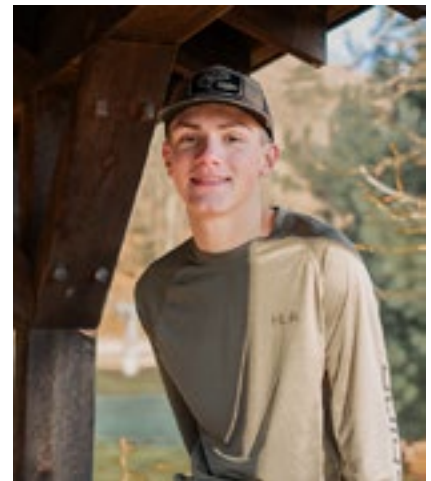


Alexis Farber
B.S. in Surveying
Engineering



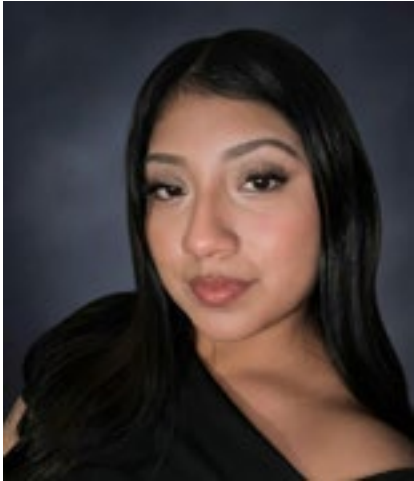
Charles Floryan
B.S. in Statistics

*"We must let go of the life we have planned, so as to accept the one that is waiting for us."
– Joseph Campbell*



Easton Gmiter
A.Eng.T. in Surveying
Engineering Technology

2025–2026 Graduates



**Jennifer
Gordillo Cadme**
B.S. in Criminal Justice

"My favorite part of being a student at Penn State Wilkes-Barre was the welcoming, home-like environment."



Elizabeth Hulbert
B.S. in Electrical
Engineering Technology



AngelinaRose Irvin
B.S. in Rehabilitation &
Human Services

*"Regret nothing,
remember everything."*



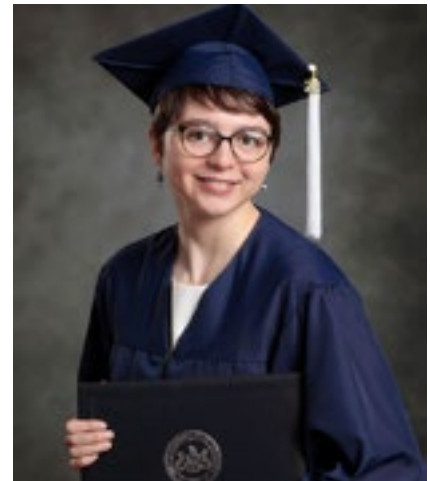
Javar Josey
B.S. in Criminal Justice

"Do not allow people's personal opinions to dictate your life. With hard work, determination and self-discipline you can accomplish many things. You cannot reach the finish line by quitting. Never give up!"



Pacelyn King
B.A. in Corporate
Communication

"My favorite part of being a student here is how welcoming the community is. I felt comfortable right away as a transfer student, and everyone made the campus feel supportive."



Natalie Klimek
B.S. in Electrical
Engineering Technology

"My favorite course was Power Systems Analysis because it broadened my knowledge and helped me better understand the infrastructure of power generation and distribution systems."

2025–2026 Graduates



Jaidyn Kotch

B.S. in Criminal Justice

"My favorite part of being a student here was the friendships I built and learning how to balance school with being an athlete. I will always love and miss my basketball teammates."



Aaron Lee

B.S. in Information Technology



Briana Mele

B.A. in Corporate Communication



Adam Musto

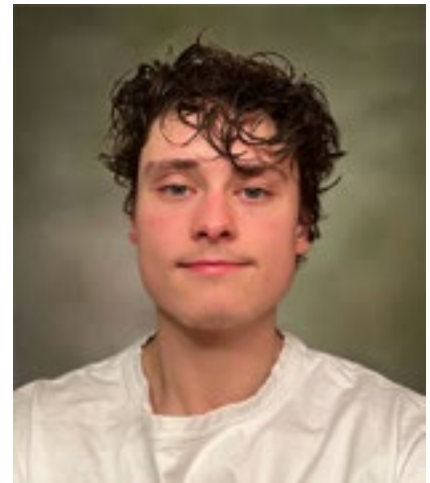
B.S. in Business



Robert Napersky

B.S. in Business

"Growing into a version of myself that I didn't know I could be [was my favorite part of being a student here]."



Thomas Oliver

A.EngT. in Surveying Engineering Technology

"Learning about other people's lives and experiences [was my favorite part of being a student here]."

2025–2026 Graduates



Aleksander Radziewicz

B.A. in Criminal Justice

"There were rarely ever big classes, everyone knew one another, and teachers responded fast."



Avery Rash

A.S. in Business Administration

"It wasn't always easy, but it was worth it."



Brayden Rogowski

B.S. in Criminal Justice

"My incredible friends [were the most influential people during my time here]."



William Rought

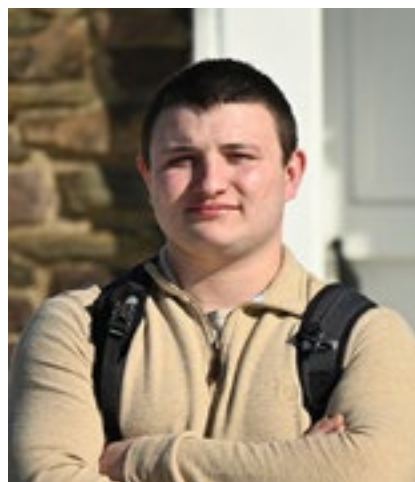
B.S. in Electrical Engineering Technology

"Mr. Tim Sichler [was most influential during my time as a student]."



Daniel Sassaman

A.EngT. in Surveying Engineering Technology



Timothy Schechterly, Jr.

B.S. in Electrical Engineering Technology

"Powered by EET, driven for what's next."

2025–2026 Graduates



Gabriella Schmoll
B.S. in Rehabilitation &
Human Services

"The most influential person I had on campus was Mrs. Littleton; she pushed me every single day to be a better person and prepared me for my future."



Sunday Sem
A.S. in Information
Sciences & Technology



Jacob Seymour
B.S. in Business

"There is less traffic when you go the extra mile."



Joanna Shaw
B.S. in Rehabilitation &
Human Services

"Activities in the library [were my favorite part of being a student here]."



Brady Sholtis
B.A. in Corporate
Communication

"[My favorite parts of being a student at Penn State Wilkes-Barre] were being the president of Music Society and doing as much as I could here."



Anna Smagin
B.A. in Criminal Justice

2025–2026 Graduates



Abigail Strange
B.S. in Criminal Justice



Sadie Taylor
B.S. in Business and
B.S. in Project and Supply
Chain Management



Garrett Vought
B.S. in Business



Sarah Watkins
B.S. in Criminal Justice

"My favorite part of being a student was hosting and writing a murder mystery dinner party."



Noah Zim
B.S. in Electrical
Engineering Technology

*"Success is not final, failure is not fatal: it is the courage to continue that counts."
– Winston Churchill*



Faculty

Molly Abdalla, Student Engagement and Outreach Librarian

Christyne Berzsenyi, Ph.D., Professor, English §

Pamela Black, Ph.D., Professor, Criminal Justice §

Daniel Blessner, Associate Teaching Professor, Science and Mathematics

Dimitrios Bolkas, Ph.D., Associate Professor, Surveying Engineering §

Ann Brennan, Ph.D., Associate Teaching Professor, English

Erin Brennan, J.D., Assistant Teaching Professor, Business

Anson Carter, Lecturer, Mathematics

Wei-Fan Chen, Ph.D., Professor, Information Technology §

Adriana Dinescu, Ph.D., Assistant Teaching Professor, Chemistry

Anatoli Ivanov, Ph.D., Distinguished Professor, Mathematics

Gregory Katucki, Lecturer, Electrical Engineering Technology

Melisa Littleton, Associate Teaching Professor, Rehabilitation and Human Services §

Valerie Lynn, Head Librarian

Violet Mager, Ph.D., Associate Professor, Physics and Astronomy

Salvatore Marsico, J.D., Associate Professor, Engineering

Iris Ouellette, Lecturer, English

Deyu Pan, Ph.D., Assistant Professor, Rehabilitation and Human Services §

Jonathan Pineno, Assistant Teaching Professor, Music and Art

Brian Reese, Lecturer, Information Technology §

Matthew Sharr, Lecturer, Surveying Engineering

Timothy Sichler, Associate Teaching Professor, Electrical Engineering Technology §

Natalya Vodopyanova, Ph.D., Assistant Teaching Professor, Corporate Communication §

Adjunct Faculty

Janine Becker, Business

Andrew Bloom, Engineering

Christopher Burke, Gaming

Luciana Caporaletti, Biology

Theresa Clemente, Business

Meredith Cosgrove, Health & Human Dev.

Cory Flick, Criminal Justice

Theodore Frear, Surveying Engineering

Seth Gulich, Surveying Engineering

Heidi Hojnowski-Sims, Spanish

Robert Jolley, Criminal Justice

Laura Little, Business

Leslie Livingstone, Kinesiology

Randy Lucas, Surveying Engineering

Alma McGarry, Criminal Justice

James McMonagle, Business

Sabrina Murphy, Sociology

Eric Nazarchuk, Social Sciences

Elaine O'Donnell, Biology

Michael O'Neill, Electrical Engineering Tech.

Kaitlin Rando, English

Kimberly Shina, Accounting

Megan Tarselli, Education

Staff

Rebecca Allen

Lili Bao

Susan Bartal

Jonathan Belanger

Melinda Bennett

Karen Beruck

Aurora Brunovsky

Christopher Burke

Maureen Carr

Lorna Chin

Michael Chura

Meredith Cosgrove

Diana Coslett

Maria DeLuca

Jo Ann Durdan

Alex Ellsworth

Alyssa Ellsworth

Marie Ferriero

Julia Freund

Tracy Garnick

Christine Gerhardt

Joseph Gesek

Tricia Gesek

Auraleah Grega

Jaclyn Gregor

Ronald Gruver

Susan Hay

Christy Healey

David Horowitz

Diane Hoyt-Green

Benjamin Hugendubler

Maria Hummel

Jeffrey Johnson

Vinelle Johnson

James Joos

Rianna Karalunas

Edward Keil

Agnès Kim

Jonathan Kukta

Darlene Luca

Jason Maciejczak

Aaron Mattern

Matthew Nied

Robert Notari

Dale Osenbach

Jennifer Oshinski

John Owens

Ty Pace

Heather Paris

Michelle Peasley

Colleen Racho

Paul Shaver

Jacob Sinkiewicz

Courtney Snow

Mary Sochovka

Gail Stevens

Sarah Tichenor

Desiree Voitek

Tina Weidele

Janis Winter

Penn State Wilkes-Barre

2025–2026 Advisory Board

Jill Schwartz, *Chair*
David Reese, *First Vice Chair*
Michael J. Hudacek Jr., *Second Vice Chair*
James Regan, Jr., *Treasurer*
Rachel Wiernusz, *Secretary*
David M. Callejo Pérez, *Interim Regional Chancellor*

Peter Austin
Bernard C. Banks, Jr.
Will Beekman
Brent Berger
Shane J. Bradley
Mark Calore
Megan Calore
Paula Chaiken

Joseph Dessoie
Samuel Elias
Amy Feldman
Robert Friedman
Christina J. Gelso
Jason Harlen
David Hoffman
Robert Katulka
Lee Lispi

Geraldine Nesbitt
Frank Nocito
Kenneth Pollock II
Kady Schwartz
Mark J. Sobeck
Richard Struthers
Richard Williams
Jeffrey Yelen

Board Members Emeriti

Christopher L. Borton
James J. Brozena
Jonathan U. Dougherty
Nancy W. Eckert
William V. Leandri
Joseph F. Perugino
Joseph J. Rymar
Carol Sabatini

Ex Officio Members

Salvatore Marsico, J.D., Chair, Wilkes-Barre Faculty Senate
John Lombardo, Chair, Luzerne County Council
David Sutton, Chairman, Lehman Township
Jacinda Rose, President, Student Government Association
Kelley Williams, President,
Penn State Wilkes-Barre Alumni Society
Joseph and Tiziana Mazzarella, Co-Presidents,
Wyoming Valley Chapter of the
Penn State Alumni Association



Resources for new alumni

[Penn State Alumni Association](#)

The Penn State Alumni Association is the largest and most powerful alumni network in the world, and new graduates receive a complimentary one-year membership. As you enter the pride, you'll join the ranks of alumni who keep their connection to Penn State strong. We encourage you to stay connected and learn more about the 30+ benefits included with your membership.

To access a full list of benefits and to find your local Penn State Alumni Association chapter, visit alumni.psu.edu/newalumni.

[Career Services](#)

The Struthers Family Career Services Center is here to support you with your career planning. More information is available at wilkesbarre.psu.edu/career-services.

[Registrar's Office – Requesting Official Transcripts](#)

Call 814-865-6357 for instructions on ordering transcripts or visit registrar.psu.edu.



You're a Lion for life...



**PennState
Alumni Association**

...and you belong in the Alumni Association.

Congratulations on your graduation! You've earned your place in the largest and most powerful alumni network in the world.

The Penn State Alumni Association connects you to the global community of more than 800,000 Penn Staters and keeps your connection to Dear Old State strong. It also includes more than 30 benefits, including exclusive discounts, access to our local chapters, and members-only networking and career services.

Watch the mail for your welcome kit and make the most of your complimentary one-year membership.

Benefits of Belonging



**Local
Connections**



**LionPerks
Discounts**



**Career
Resources**



Networking



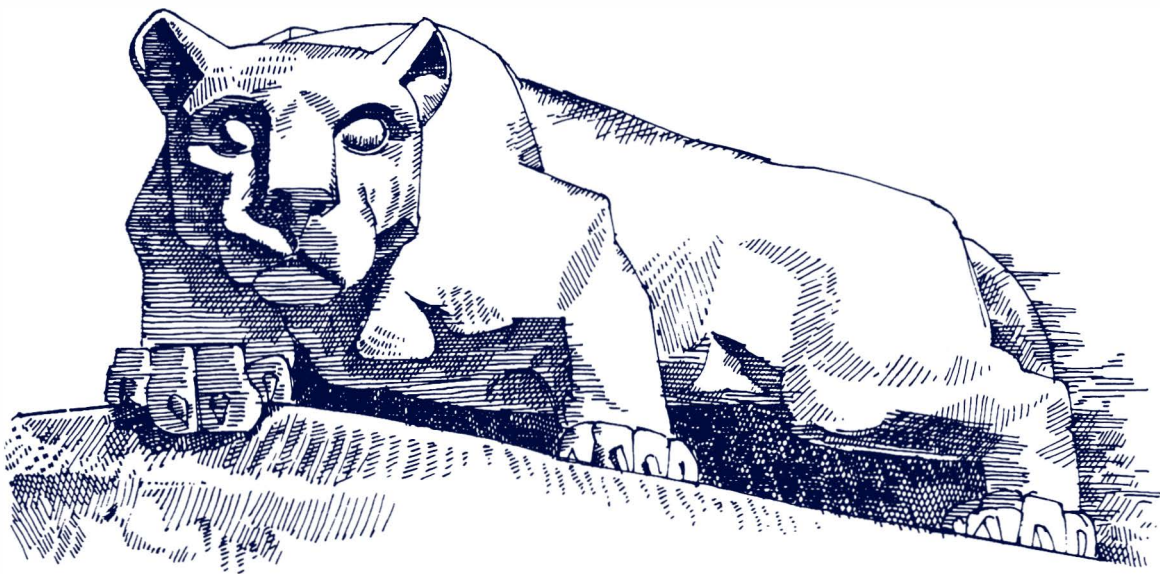
**Exclusive
Content**



**PennState
Alumni Association**

alumni.psu.edu/newalumni





This publication is available in alternative media on request. Penn State is an equal opportunity employer and is committed to providing employment opportunities to all qualified applicants without regard to race, color, religion, age, sex, sexual orientation, gender identity, national origin, disability or protected veteran status. If you are unable to utilize the application process due to an impairment or disability, please contact 570-675-9252. UBR WBO #26-10



PennState
Wilkes-Barre